

# District Trends Subcommittee – DEMOGRAPHIC DATA **DRAFT**

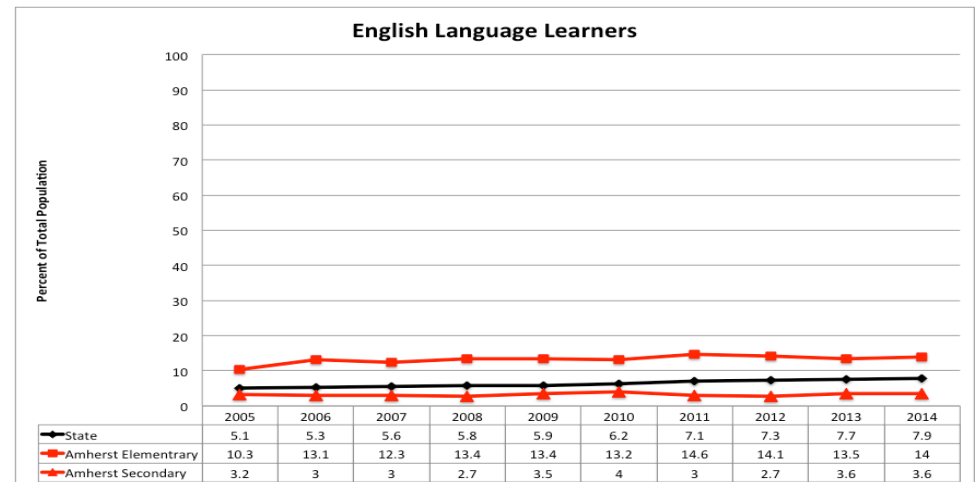
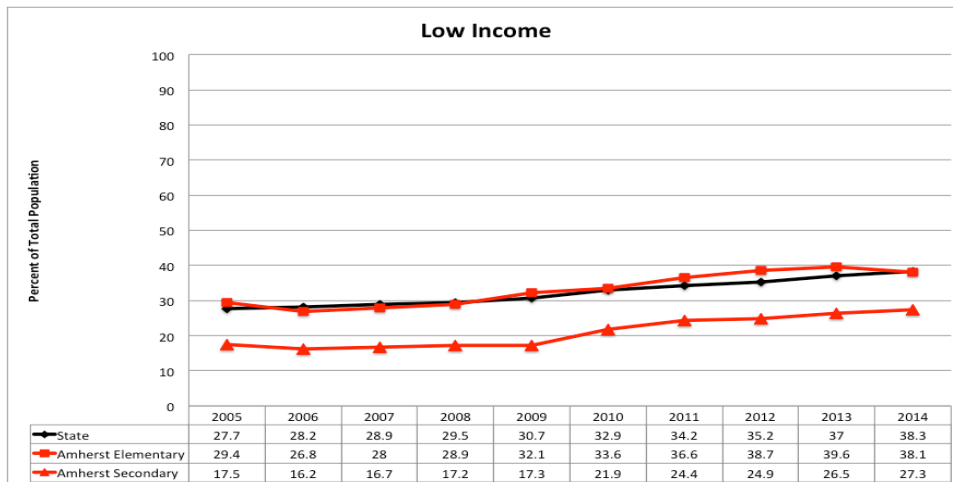
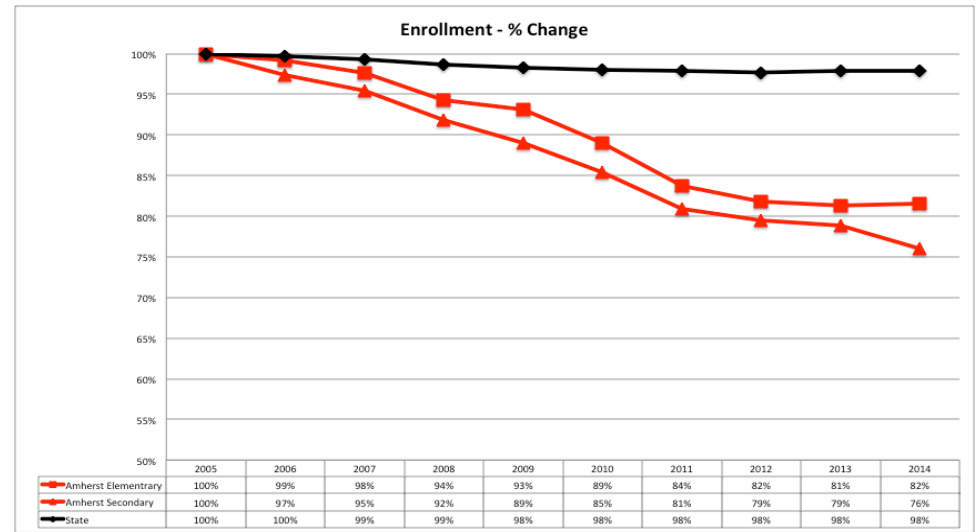
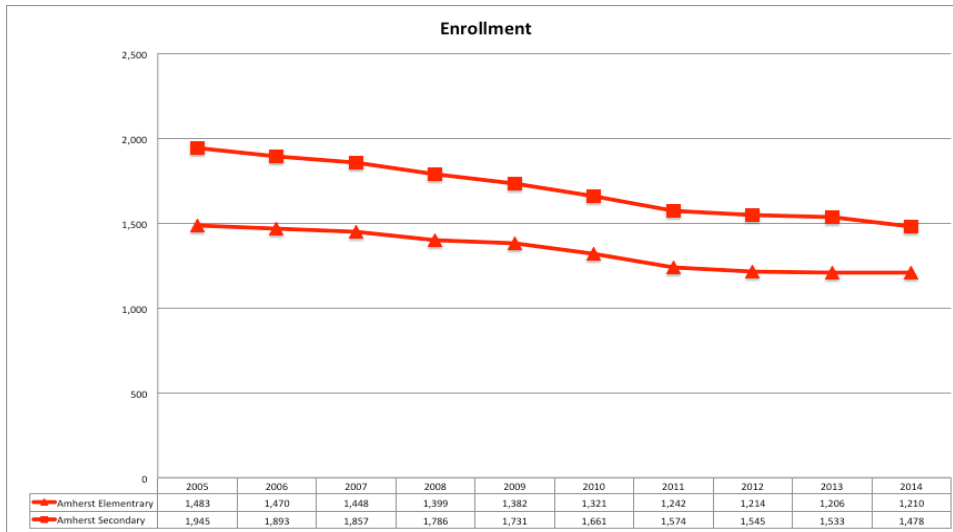
February 24, 2015

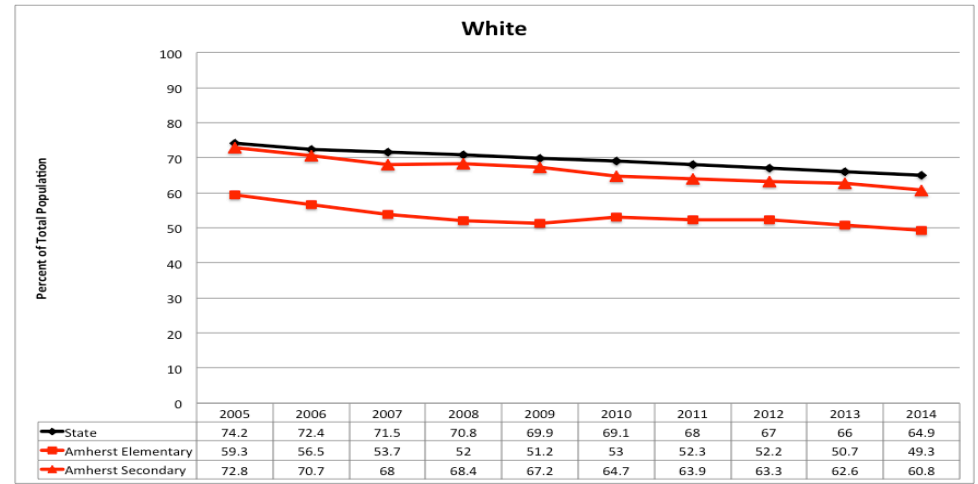
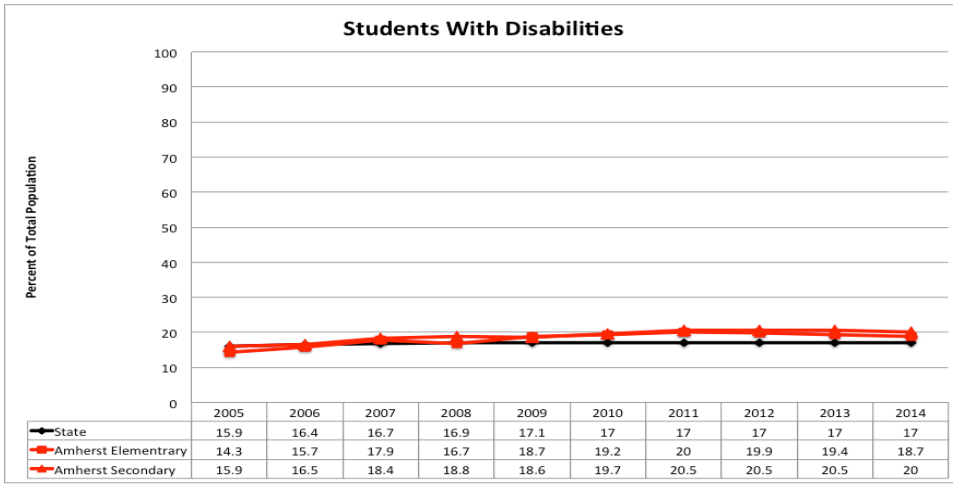
Source of this data:

Amherst: <http://profiles.doe.mass.edu/profiles/student.aspx?orgcode=00080000&orgtypecode=5&>

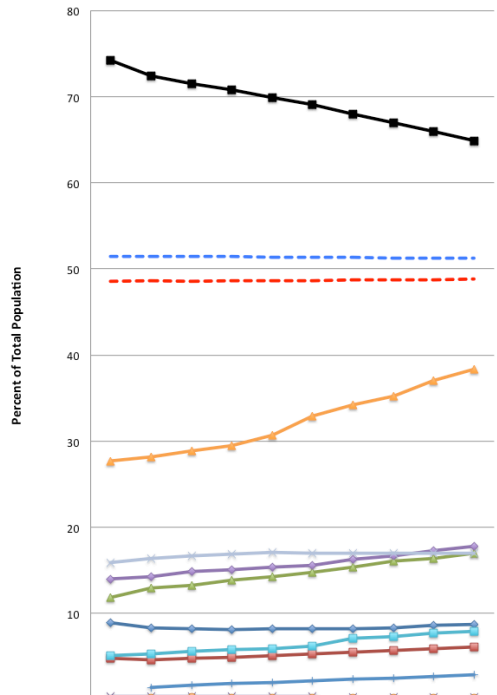
Amherst Pelham Regional: <http://profiles.doe.mass.edu/profiles/student.aspx?orgcode=06050000&orgtypecode=5&>

State data is included on both of the above.



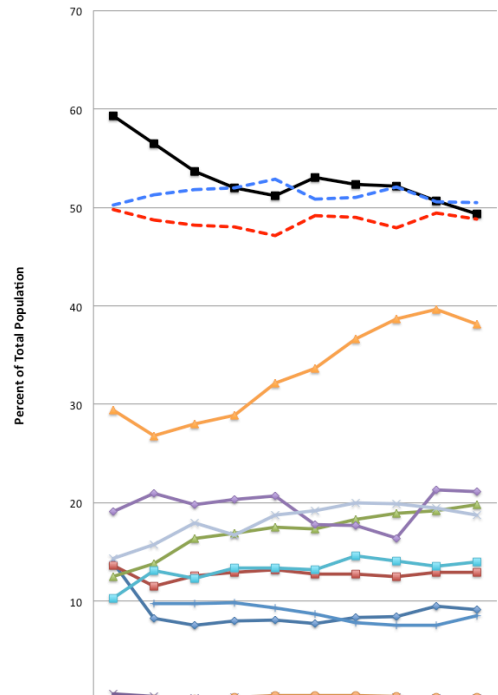


### Demographics - State



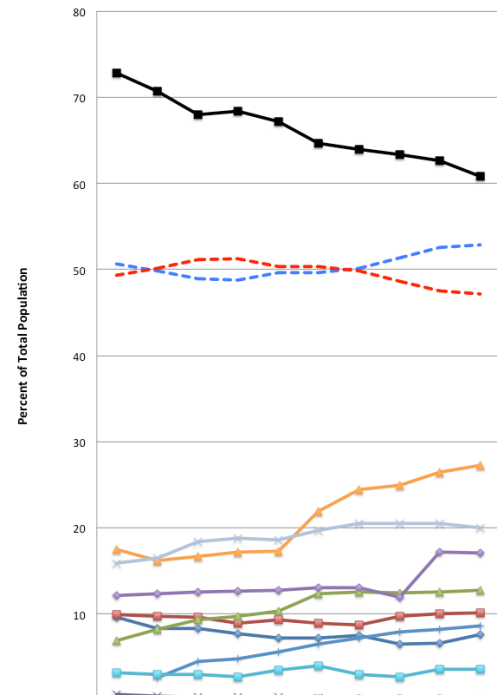
	2005	2006	2007	2008	2009	2010	2011	2012	2013	2014
African American	8.9	8.3	8.2	8.1	8.2	8.2	8.3	8.6	8.7	
Asian	4.8	4.6	4.8	4.9	5.1	5.3	5.5	5.7	5.9	6.1
Hispanic	11.8	12.9	13.3	13.9	14.3	14.8	15.4	16.1	16.4	17
Native American	0.3	0.3	0.3	0.3	0.3	0.2	0.2	0.2	0.2	0.2
White	74.2	72.4	71.5	70.8	69.9	69.1	68	67	66	64.9
Native Hawaiian, Pacific Islander	0.1	0.2	0.1	0.1	0.1	0.1	0.1	0.1	0.1	0.1
Multi-Race, Non-Hispanic	1.4	1.7	1.9	2	2.2	2.4	2.5	2.7	2.9	
Male	51.4	51.4	51.4	51.4	51.4	51.3	51.3	51.3	51.2	51.2
Female	48.6	48.6	48.6	48.6	48.6	48.7	48.7	48.7	48.8	48.8
First Language not English	14	14.3	14.9	15.1	15.4	15.6	16.3	16.7	17.3	17.8
English Language Learner	5.1	5.3	5.6	5.8	5.9	6.2	7.1	7.3	7.7	7.9
Low-income	27.7	28.2	28.9	29.5	30.7	32.9	34.2	35.2	37	38.3
Students With Disabilities	15.9	16.4	16.7	16.9	17.1	17	17	17	17	17

### Demographics - Amherst Elementary



	2005	2006	2007	2008	2009	2010	2011	2012	2013	2014
African American	13.9	8.2	7.5	8	8.1	7.7	8.3	8.4	9.5	9.1
Asian	13.6	11.5	12.6	12.9	13.2	12.7	12.7	12.5	12.9	12.9
Hispanic	12.5	13.8	16.4	16.9	17.5	17.3	18.3	18.9	19.2	19.8
Native American	0.6	0.3	0.1	0.2	0.3	0.2	0.2	0.2	0.1	0.1
White	59.3	56.5	53.7	52	51.2	53	52.3	52.2	50.7	49.3
Native Hawaiian, Pacific Islander	0	0	0.2	0.4	0.4	0.4	0.3	0.2	0.2	0.2
Multi-Race, Non-Hispanic	9.7	9.7	9.8	9.3	8.7	7.8	7.5	7.5	8.5	
Male	50.2	51.3	51.8	52.0	52.9	50.8	51.0	52.1	50.6	50.5
Female	49.8	48.7	48.2	48.0	47.1	49.2	49.0	47.9	49.4	48.8
First Language not English	19.1	20.9	19.8	20.3	20.7	17.8	17.7	16.4	21.3	21.1
English Language Learner	10.3	13.1	12.3	13.4	13.4	13.2	14.6	14.1	13.5	14
Low-income	29.4	26.8	28	28.9	32.1	33.6	36.6	38.7	39.6	38.1
Students With Disabilities	14.3	15.7	17.9	16.7	18.7	19.2	20	19.9	19.4	18.7

### Demographics - Amherst-Pelham Secondary



	2005	2006	2007	2008	2009	2010	2011	2012	2013	2014
African American	9.6	8.3	8.3	7.7	7.2	7.2	7.5	6.5	6.6	7.6
Asian	9.9	9.7	9.6	8.9	9.3	8.9	8.7	9.7	10	10.1
Hispanic	6.9	8.2	9.3	9.7	10.3	12.3	12.5	12.4	12.5	12.7
Native American	0.7	0.5	0.4	0.4	0.3	0.2	0.1	0.1	0	0.1
White	72.8	70.7	68	68.4	67.2	64.7	63.9	63.3	62.6	60.8
Native Hawaiian, Pacific Islander	0	0	0	0	0.1	0.1	0.1	0.1	0	0
Multi-Race, Non-Hispanic	2.6	4.5	4.8	5.6	6.5	7.2	7.9	8.2	8.6	
Male	50.6	49.8	48.9	48.8	49.7	49.7	50.1	51.3	52.5	52.8
Female	49.4	50.2	51.1	51.2	50.3	50.3	49.9	48.7	47.5	47.2
First Language not English	12.1	12.3	12.5	12.6	12.7	13	13	11.9	17.2	17.1
English Language Learner	3.2	3	3	2.7	3.5	4	3	2.7	3.6	3.6
Low-income	17.5	16.2	16.7	17.2	17.3	21.9	24.4	24.9	26.5	27.3
Students With Disabilities	15.9	16.5	18.4	18.8	18.6	19.7	20.5	20.5	20.5	20

